



ICN

8th Annual Conference | Zurich, Switzerland
June 3 – 5, 2009

GENERAL INFORMATION

Dear Guest,

Thank you for registering to the ICN 8th Annual Conference from June 3 to 5, 2009 in Zurich, Switzerland.

Please take note of the following information prior to your departure. We recommend you bring this document with you to the ICN Conference.

CONTENTS

1. **GENERAL INFORMATION**
2. **VENUE INFORMATION**
3. **TRAVEL INFORMATION**



ICN

8th Annual Conference | Zurich, Switzerland
June 3 – 5, 2009

1. GENERAL INFORMATION

ICN 8TH ANNUAL CONFERENCE

Date	June 3 to 5, 2009
Conference Venue	Kongresshaus Zürich Gotthardstrasse 5 8022 Zurich
Website	http://www.icn-zurich.org

REGISTRATION

The registration desk will be open at the following times:

- Tuesday, June 2, 2009 from 4.30 pm to 8.30 pm
- Wednesday, June 3, 2009 from 8.00 am to 8.30 am

SECURITY

Please bring the confirmation of your registration with you to the ICN Conference. You will receive your name badge at the Registration Desk. This name badge is your personal entry ticket that allows you to participate at the ICN Conference and at the related social activities.

OFFICIAL LANGUAGE

The official conference language is English. Please note that the Welcoming Addresses will be in German, but translated into English.

DRESS CODE

You are kindly requested to wear business attire. Due to time constraints, you will not be able to change after the Conference. Shuttle buses will leave directly from the Conference Venue to the Evening Venues.

WIRELESS LAN AND INTERNET CORNER

At the *Kongresshaus* you will be able to use, free of charge, the Conference Wireless LAN. You will receive the access code at the Congress Office. In addition to the W-LAN, there will be ten laptops with internet connections limited to one 30-minute period, which may be extended to another 30-minute period if there are no other conference attendees waiting. Also, printers in the Internet Corner of the Gallery will be available.



ICN

8th Annual Conference | Zurich, Switzerland
June 3 – 5, 2009

1. GENERAL INFORMATION

SMOKING

There are no smoking areas inside, smoking is only allowed outside.

CLIMATE

In June, the average temperature in Zurich is 25° C. Please note that thunderstorms are possible.

TIPPING

Generally, tips are included in Switzerland.

CURRENCY

The Swiss Franc is the currency of Switzerland. You can often pay with Euros but not everywhere, please note that you will get Swiss Francs change and they only accept Euro bills and not Euro coins.

EMERGENCY NUMBERS

Congress Office	Hotline: +41 79 236 94 94
	Fax: +41 44 206 34 00
Police	117
Medical Emergency	144

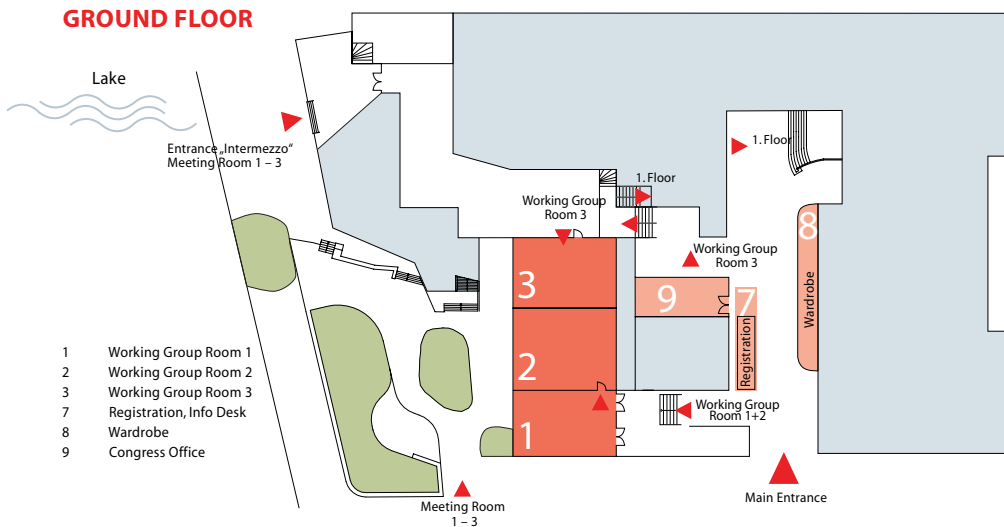
2. VENUE INFORMATION

CONFERENCE VENUE

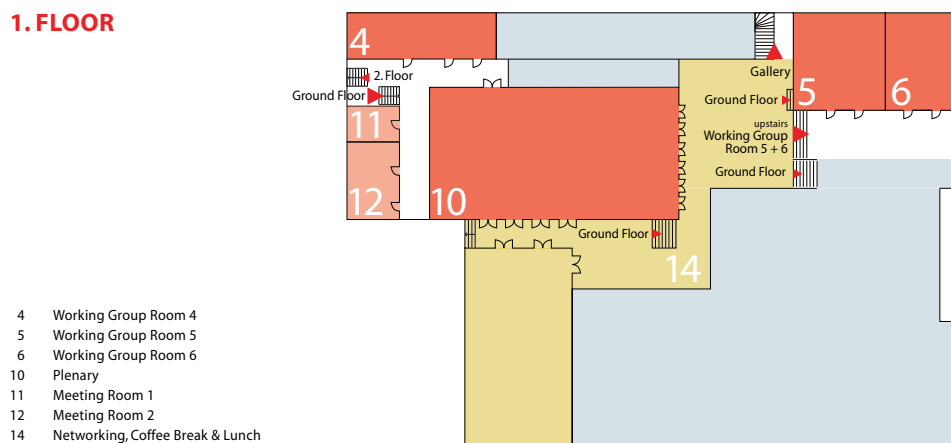
The ICN 8th Annual Conference will take place at the *Kongresshaus* Zurich. It is situated right on the lake promenade and it is just minutes away from the city center with main shopping streets and sightseeing. The *Kongresshaus* Zurich is a house full of tradition and is highly regarded by the city and its people.

FLOOR MAPS

GROUND FLOOR



1. FLOOR



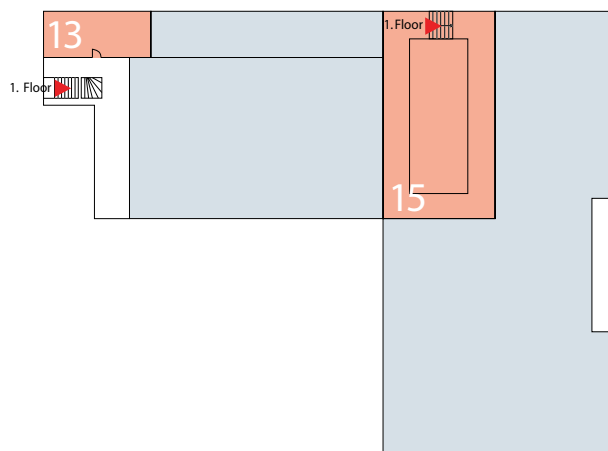


ICN

8th Annual Conference | Zurich, Switzerland
June 3 – 5, 2009

2. VENUE INFORMATION

2. FLOOR



- 13 Meeting Room 3
- 15 Internet Corner | Gallery

MEETING ROOMS AT THE CONFERENCE VENUE

During the ICN Conference three Meeting Rooms (two rooms for 24 people and one room for 10 people) will be available. The Meeting Rooms can be booked at the Congress Office located on the ground floor.

WELCOME RECEPTION | TUESDAY, JUNE 2, 2009 | FESTSAAL IM KAUFLEUTEN

Zurich's hip crowd likes to gather at *Festsaal im Kaufleuten*. It is an excellent place for evening entertainment and eating. The *Festsaal im Kaufleuten* belongs to the internationally known *Kaufleuten* and connects the tradition (culture and history of the businesspeople) with the modern age (architecture hall). The *Festsaal im Kaufleuten* is the ideal place to start the ICN Conference in Zurich.

STANDING RECEPTION | WEDNESDAY, JUNE 3, 2009 | LAKE SIDE

On the evening of the first Conference day, you will be led to the wonderful shores of the Zurich Lake. A ferry will take you directly from the *Kongresshaus* to the Lake Side. At the Lake Side, we will receive you on the wonderful terrace as well as in the entrance hall and the hall of the first floor. The ideal place for an atmospheric standing reception in a modern ambience: lounge, cocktail tables, candlelight, the lake and in the background, the sweet music of Swiss jazz singer Daniela Sarda.

DINNER ON THE MOUNTAIN | THURSDAY, JUNE 4, 2009 | UTO KULM

At the end of the second Conference day, we will accompany you to the top of *Uetliberg*. A short forest path (max. 10 minutes) leads directly to the magnificent plateau. The path is also accessible for disabled persons. On the plateau, we will be serving beverages. At the restaurant, talented Swiss artists will mix traditional Alphorn music with modern jazz rhythm. It promises to be a fantastic evening on Zurich's famous mountain.



ICN

8th Annual Conference | Zurich, Switzerland
June 3 – 5, 2009

3. TRAVEL INFORMATION

HOW TO GET TO ZURICH

HOW TO GET TO ZURICH

Zurich is situated in the heart of Europe and in the center of Switzerland. It is easily accessible from everywhere – by train, car or plane.

ARRIVAL BY PLANE

The journey from the airport to the city center is only 10 minutes by train (with S2, S16 and the intercity express every 15 minutes) or about 20 minutes by taxi. Many hotels in the city offer their own bus service. These buses depart from the area in front of Terminals 1 and 2.

On June 2, 2009 between 7.00 am and 7.00 pm there will be an ICN Conference shuttle service from the airport to the ICN Conference Hotels available approximately every 90 minutes. The ICN's Conference information desk will be located at Terminal 2. Please follow the «ICN Conference» signs to the information desk.

ARRIVAL BY TRAIN

More than 1,900 trains stop at Zurich's centrally located main station every day. Direct and frequent services from all the major Swiss cities and European metropolitan centers enable passengers to arrive in Zurich quickly, easily and in comfort. Further information on train timetables can be found at www.sbb.ch/en/index.htm.

You can get to the ICN Conference Hotels from the main station of Zurich by tram or bus.

**ICN**8th Annual Conference | Zurich, Switzerland
June 3 – 5, 2009

3. TRAVEL INFORMATION

ARRIVAL BY TRAIN

HOTEL	BUS OR TRAM NO.	DIRECTION	STATION	WALK DISTANCE TO THE HOTEL
Ascot	Tram No. 6 or 7	Bahnhof Enge (No. 6) / Wollishofen (No. 7)	Bahnhof Enge	50 meters
Baur au Lac	Tram No. 11	Rehalp	Bürkliplatz	100 meters
City-Hotel	Tram No. 3 or 14	Albisrieden (No. 3) / Triemli (No. 14)	Löwenplatz	100 meters
Comfort Inn Royal	Tram No. 10 or 6	Zürich Flughafen (No. 10) / Zoo (No. 6)	Haldenegg	20 meters
Continental	Tram No. 11 or 14	Auzelg (No. 11) / Seebach (No. 14)	Stampfenbachplatz	100 meters
easy Hotel	Bus No. 31	Schlieren Zentrum	Kanonengasse	100 meters
Eden au Lac	Tram No. 4	Tiefenbrunnen	Kreuzstrasse	150 meters
Engimatt	Tram No. 13	Albisgütli	Sihlcity Nord	100 meters
Four Points	Tram No. 13	Albisgütli	Sihlcity Nord	50 meters
Glärnischhof	Tram No. 6 or 7 or 8 or 13	Bahnhof Enge (No. 6) / Wollishofen (No. 7) / Hardplatz (No. 8) Albisgütli (No. 13)	Stockerstrasse	150 meters
Glockenhof	Tram No. 6 or 7 or 11 or 13	Bahnhof Enge (No. 6) / Wollishofen (No. 7) / Rehalp (No. 11) / Albisgütli (No. 13)	Rennweg	100 meters
Limmathof	Tram No. 4	Tiefenbrunnen	Central	250 meters (from the main station) 50 meters (from the tram station)

**ICN**8th Annual Conference | Zurich, Switzerland
June 3 – 5, 2009

3. TRAVEL INFORMATION

HOTEL	BUS OR TRAM NO.	DIRECTION	STATION	WALK DISTANCE TO THE HOTEL
Marriott Hotel	Tram No. 11 or 14	Auzelg (No. 11) / Seebacj (No. 14)	Stampfenbachplatz	50 meters
Park Hyatt Zurich	Tram No. 6 or 7 or 8 or 13	Bahnhof Enge (No. 6) / Wollishofen (No. 7) / Hardplatz (No. 8) Albisgütli (No. 13)	Stockerstrasse	200 meters
Rütli Sorell Hotel	Tram No. 4	Tiefenbrunnen	Central	300 meters (from the main station) 100 meters (from the tram station)
Scheuble	Tram No. 4	Tiefenbrunnen	Rudolf-Brun-Brücke	100 meters
Seidenhof	Tram No. 6 or 7 or 11 or 13	Bahnhof Enge (No. 6) / Wollishofen (No. 7) / Rehalp (No. 11) / Albisgütli (No. 13)	Rennweg	100 meters
Sheraton Neues Schloss Hotel	Tram No. 6 or 7 or 8 or 13	Bahnhof Enge (No. 6) / Wollishofen (No. 7) / Hardplatz (No. 8) Albisgütli (No. 13)	Stockerstrasse	200 meters
Splügenschloss	Tram No. 6 or 7 or 13	Bahnhof Enge (No. 6) / Wollishofen (No. 7) / Albisgütli (No. 13)	Tunnelstrasse	200 meters
St. Gotthard	-	-	-	150 meters (from the main station)
Widder Hotel	Tram No. 6 or 7 or 11 or 13	Bahnhof Enge (No. 6) / Wollishofen (No. 7) / Rehalp (No. 11) / Albisgütli (No. 13)	Rennweg	100 meters
Zürcherhof	Tram No. 4	Tiefenbrunnen	Rudolf-Brun-Brücke	150 meters



ICN

8th Annual Conference | Zurich, Switzerland
June 3 – 5, 2009

3. TRAVEL INFORMATION

ARRIVAL BY CAR

Thanks to Switzerland's extensive highway network, Zurich can be conveniently reached from the other major Swiss cities and neighbouring countries. The Google Maps Planner <http://maps.google.co.uk/maps?f=q&hl=en&geocode=&time=&date=&ttype=&q=Z%C3%BCrich&ie=UTF8&z=12&iwloc=addr&om=1> shows you the fastest way to arrive in Zurich.

Finding a free parking space in Zurich is not always easy. The parking control system means you can find the nearest parking space with ease. Once you arrive in the city, electronic displays indicate the route to various parking spots. Some ICN Conference Hotels have their own parking. Please, clarify this directly with your hotel.

FOLLOWING CAR PARKS IN THE CITY ARE NEXT TO THE KONGRESSHAUS:

CAR PARKS	OPENING TIMES	DISTANCE TO THE KONGRESSHAUS
Park Hyatt Beethovenstrasse 20 8002 Zurich	24 hours a day 7 days a week	Next to the <i>Kongresshaus</i> with walking distance approx. 2 minutes
Bleicherweg Beethovenstrasse 35 8002 Zurich	Monday to Thursday and Sundays Friday to Saturday	from 6.00 am to 2.30 am from 6.00 am to 4.30 am
		Walking distance to the <i>Kongresshaus</i> approx. 5 minutes

Further information on car parking spaces in Zurich can be found at www.pls-zh.ch.

**ICN**8th Annual Conference | Zurich, Switzerland
June 3 – 5, 2009

3. TRAVEL INFORMATION

GETTING FROM THE CONFERENCE HOTELS TO THE CONFERENCE VENUE AND TO THE EVENING VENUES

GETTING FROM THE CONFERENCE HOTELS TO THE CONFERENCE VENUE

During the ICN Conference you will receive a special ticket for the public transport. This ticket entitles you to unlimited 2nd class travel on all public transportation (bus, tram and s-train) in Zone 10 and it will be valid from June 3 to 5, 2009. You will get this ticket at the registration desk at the *Kongresshaus*.

You can get to the Conference Venue from the Conference Hotel by tram or bus. Further information on bus or tram lines can be found at the ZVV's plan of Zurich and on the list below.

HOTEL	BUS OR TRAM NO.	DIRECTION	STATION	WALK DISTANCE TO THE HOTEL
Ascot	Tram No. 5	Kirche Fluntern	Bürkliplatz	200 meters
Baur au Lac	-	-	-	100 meters
City-Hotel	Tram No. 2 or 9	Tiefenbrunnen (No. 2) / Hirzenbach (No. 9)	Bürkliplatz	200 meters
Comfort Inn Royal	Tram No. 6	Bahnhof Enge	Stockerstrasse	200 meters
Continental	Tram No. 11	Rehalp	Bürkliplatz	200 meters
easy Hotel	Bus No. 31 then Tram No. 11	Zürich Hegibachplatz (Bus No. 31) then Rehalp (Tram No. 11)	Bus: Bahnhofplatz Tram: Bürkliplatz	200 meters
Eden au Lac	Tram No. 2	Farbhof	Bürkliplatz	200 meters
Engimatt	Tram No. 5	Kirche Fluntern	Bürkliplatz	200 meters
Four Points	Tram No. 5	Kirche Fluntern	Bürkliplatz	200 meters
Glärnischhof	-	-	-	200 meters
Glockenhof	Tram No. 11	Rehalp	Bürkliplatz	200 meters
Limmathof	Tram No. 6 or 7	Bahnhof Enge (No. 6) / Wollishofen (No. 7)	Stockerstrasse	200 meters

**ICN**8th Annual Conference | Zurich, Switzerland
June 3 – 5, 2009

3. TRAVEL INFORMATION

HOTEL	BUS OR TRAM NO.	DIRECTION	STATION	WALK DISTANCE TO THE HOTEL
Marriott Hotel	Tram No. 11	Rehalp	Bürkliplatz	200 meters
Park Hyatt Zurich	-	-	-	50 meters
Rütli Sorell Hotel	Tram No. 6 or 7	Bahnhof Enge (No. 6) / Wollishofen (No. 7)	Stockerstrasse	200 meters
Scheuble	Tram No. 4 then Tram No. 2 / 5 / 9 or 11	Tiefenbrunnen (No. 4) then Farbhof (No. 2), Laubegg (No. 5), Heuried (No. 9)	Bellevue, then Bürkliplatz	200 meters
Seidenhof	Tram No. 11	Rehalp	Bürkliplatz	200 meters
Sheraton Neues Schloss Hotel	-	-	-	100 meters
Splügenschloss	-	-	-	250 meters
St. Gotthard	Tram No. 11	Rehalp	Bürkliplatz	200 meters
Widder Hotel	Tram No. 11	Rehalp	Bürkliplatz	200 meters
Zürcherhof	Tram No. 4 then Tram No. 2 / 5 / 9 or 11	Tiefenbrunnen (No. 4) then Farbhof (No. 2), Laubegg (No. 5), Heuried (No. 9)	Bellevue, then Bürkliplatz	200 meters

Further information on train timetables can be found at www.zvv.ch/en/timetables.



ICN

8th Annual Conference | Zurich, Switzerland
June 3 – 5, 2009

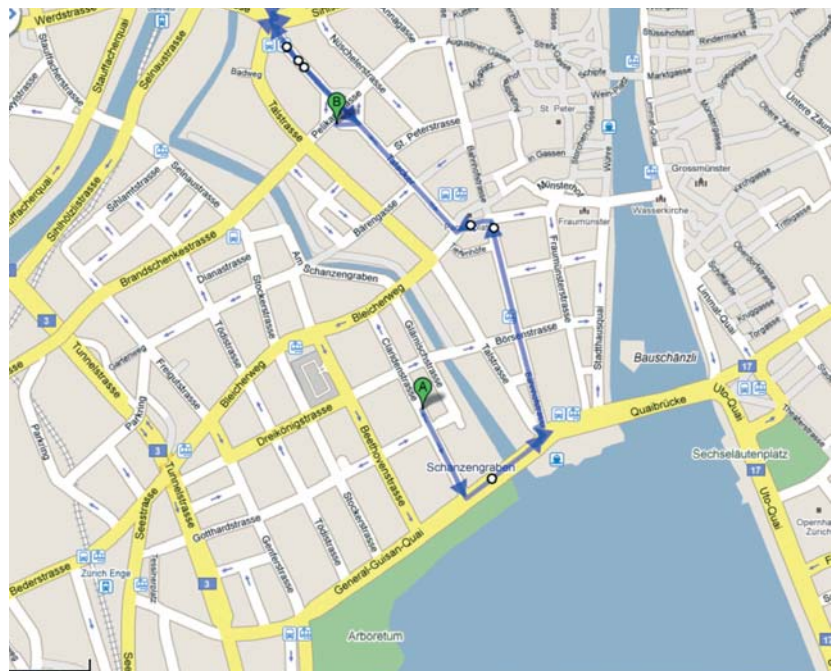
3. TRAVEL INFORMATION

GETTING FROM THE CONFERENCE VENUE TO THE EVENING VENUES

WELCOME RECEPTION AT THE KAUFLEUTEN ON JUNE 2, 2009 FROM 7.00 PM TO 9 PM

Before going to the Welcome Reception at the Kaufleuten, you have to register and receive your name badge at the registration desk at the *Kongresshaus*. Please take the printed confirmation of your registration with you. The registration desk is open on June 2, 2009 from 4.30 pm to 8.30 pm. In order to get to the *Kaufleuten*, please follow the instructions on the map below.

Address **Kaufleuten Restaurants**
Festsaal
Pelikanplatz
8001 Zurich



STANDING RECEPTION AT THE LAKE SIDE ON JUNE 3, 2009 FROM 6.00 PM TO 8.30 PM

After the first Conference day we will take a short walk to the jetty next to the *Kongresshaus*. The hostesses will show you the way. Once everyone has arrived at the jetty, we will go by ferry to the Standing Reception at the Lake Side.

DINNER ON THE MOUNTAIN ON JUNE 4, 2009 FROM 8.00 PM TO 11.00 PM

The second Conference day will end at 6.00 pm. The ICN shuttle buses will drive us to the station *Schweighof* where we will take the *Uetlibergbahn*. Two special trains will take us to the mountain station. After a ten minute walk, you will arrive at the restaurant *Uto Kulm*. The restaurant is located on the *Uetliberg*, where you will have spectacular views of the Alps. The restaurant cannot be reached by car.



ICN

8th Annual Conference | Zurich, Switzerland
June 3 – 5, 2009

3. TRAVEL INFORMATION

GETTING FROM THE EVENING VENUES TO THE CONFERENCE HOTELS

WELCOME RECEPTION AT THE KAUFLEUTEN ON JUNE 2, 2009 FROM 7.00 PM TO 9 PM

After the Welcome Reception there will be no shuttle service available. You will have to take the public transport (bus or tram) to your hotel. The bus or tram tickets cost about CHF 2.50. **Please note that you need coins to buy a ticket.** Please check the list below for further information.

HOTEL	BUS OR TRAM NO.	DIRECTION	STATION	WALK DISTANCE TO THE HOTEL
Ascot	Tram No. 2 or 9 then Tram No. 6 or 7	Tiefenbrunnen (No. 2) / Hirzenbach (No. 9) then Bahnhof Enge (No. 6) or Wollishofen (No. 7)	Tram No. 2 or 9: Paradeplatz Tram No. 6 or 7: Bahnhof Enge	50 meters
Baur au Lac	Tram No. 2 or 9	Tiefenbrunnen (No. 2) / Hirzenbach (No. 9)	Bürkliplatz	100 meters
City-Hotel	-	-	-	300 meters
Comfort Inn Royal	Tram No. 2 or 9 then Tram No. 6	Tiefenbrunnen (No. 2) / Hirzenbach (No. 9) Zoo (No. 6)	Tram No. 2 or 9: Paradeplatz Tram No. 6:Haldenegg	20 meters
Continental	Tram No. 2 or 9 then Tram No. 11	Tiefenbrunnen (No. 2) / Hirzenbach (No. 9) then Auzelg (No. 11)	Tram No. 2 or 9: Paradeplatz Tram No. 11: Stampfenbachstrasse	100 meters
easy Hotel	Tram No. 2 or 9 then Tram No. 3 or 14	Farbhof (No. 2) / Heuried (No. 9) then Klusplatz (No. 3) / Seebach (No. 14)	Tram No. 2 / 9: Stauffacher Then Tram No. 3 or 14): Sihlpost	300 meters
Eden au Lac	Tram No. 2	Tiefenbrunnen	Kreuzstrasse	150 meters
Engimatt	Tram No. 2 or 9 then Tram No. 13	Tiefenbrunnen (No. 2) / Hirzenbach (No. 9) then Albisgütli (No. 13)	Tram No. 2 or 9: Paradeplatz Tram No. 13: Sihlcity Nord	100 meters



ICN

8th Annual Conference | Zurich, Switzerland
June 3 – 5, 2009

3. TRAVEL INFORMATION

Four Points	Tram No. 2 or 9 then Tram No. 13	Tiefenbrunnen (No. 2) / Hirzenbach (No. 9) then Albisgütli (No. 13)	Tram No. 2 or 9: Paradeplatz Tram No. 13: Sihlcity Nord	50 meters
Glärnischhof	Tram No. 2 or 9 then Tram No. 6 / 7 or 8	Tiefenbrunnen (No. 2) / Hirzenbach (No. 9) then Bahnhof Enge (No. 6) / Wollishofen (No. 7) / Hardplatz (No. 8)	Tram No. 2 or 9: Paradeplatz Tram No. 6 / 7 / 8: Stockerstrasse	150 meters
Glockenhof	- Tram No. 2 or 9 then Tram No. 6 / 7 / 11 or 13	Tiefenbrunnen (No. 2) / Hirzenbach (No. 9) then Zoo (No. 6) / Stettbach (No. 7) / Auzelg (No. 11) / Frankenthal (No. 13)	Tram No. 2 or 9: Paradeplatz Tram No. 6 / 7 / 11 or 13: Rennweg	Walking distance: 250 meters Or by Tram: 100 meters
Limmathof	Tram No. 2 or 9 then Tram No. 6 or 7	Tiefenbrunnen (No. 2) / Hirzenbach (No. 9) then Zoo (No. 6) / Stettbach (No. 7)	Tram No. 2 or 9: Paradeplatz Tram No. 6 or 7: Central	50 meters (from the tram station)
Marriott Hotel	Tram No. 2 or 9 then Tram No. 11	Tiefenbrunnen (No. 2) / Hirzenbach (No. 9) then Auzelg (No. 11)	Tram No. 2 or 9: Paradeplatz Tram No. 11: Stampfenbachstrasse	50 meters
Park Hyatt Zurich	Tram No. 2 or 9 then Tram No. 6 / 7 / 8 or 13	Tiefenbrunnen (No. 2) / Hirzenbach (No. 9) then Bahnhof Enge (No. 6) / Wollishofen (No. 7) / Hardplatz (No. 8) / Albisgütli (No. 13)	Tram No. 2 or 9: Paradeplatz Tram No. 6 / 7 / 8 / 13: Stockerstrasse	200 meters
Rütli Sorell	Tram No. 2 or 9 then Tram No. 6 or 7	Tiefenbrunnen (No. 2) / Hirzenbach (No. 9) then Zoo (No. 6) / Stettbach (No. 7)	Tram No. 2 or 9: Paradeplatz Tram No. 6 or 7: Central	300 meters Hotel (from the main station) 100 meters (from the tram station)

**ICN**8th Annual Conference | Zurich, Switzerland
June 3 – 5, 2009

3. TRAVEL INFORMATION

Scheuble	Tram No. 2 or 9 then Tram No. 6 or 7	Tiefenbrunnen (No. 2) / Hirzenbach (No. 9) then Werdhölzli (No. 4)	Tram No. 2 or 9: Bellevue Tram No. 4: Rudolf-Brun-Brücke	100 meters
Seidenhof	- Tram No. 2 or 9 then Tram No. 6 / 7 / 11 or 13	- Tiefenbrunnen (No. 2) / Hirzenbach (No. 9) then Zoo (No. 6) / Stettbach (No. 7) / Auzelg (No. 11) / Frankenthal (No. 13)	- Tram No. 2 or 9: Paradeplatz Tram No. 6 / 7 / 11 or 13: Rennweg	Walking distance: 300 meters Or by Tram: 80 meters
Sheraton Neues Schloss Hotel	Tram No. 2 or 9 then Tram No. 6 / 7 / 8 or 13	Tiefenbrunnen (No. 2) / Hirzenbach (No. 9) then Bahnhof Enge (No. 6) / Wollishofen (No. 7) / Hardplatz (No. 8) / Albisgütli (No. 13)	Tram No. 2 or 9: Paradeplatz Tram No. 6 / 7 / 8 / 13: Stockerstrasse	200 meters
Splügenschloss	Tram No. 2 or 9 then Tram No. 6 / 7 or 13	Tiefenbrunnen (No. 2) / Hirzenbach (No. 9) then Bahnhof Enge (No. 6) / Wollishofen (No. 7) / Albisgütli (No. 13)	Tram No. 2 or 9: Paradeplatz Tram No. 6 / 7 / 8 / 13: Tunnelstrasse	200 meters
St. Gotthard	Tram No. 2 or 9 then Tram No. 6 / 7 / 11 or 13	Tiefenbrunnen (No. 2) / Hirzenbach (No. 9) then Zoo (No. 6) / Stettbach (No. 7) / Auzelg (No. 11) / Frankenthal (No. 13)	Tram No. 2 or 9: Paradeplatz Tram No. 6 / 7 / 11 or 13: Bahnhofstrasse	80 meters
Widder Hotel	Tram No. 2 or 9 then Tram No. 6 / 7 / 11 or 13	Tiefenbrunnen (No. 2) / Hirzenbach (No. 9) then Zoo (No. 6) / Stettbach (No. 7) / Auzelg (No. 11) / Frankenthal (No. 13)	Tram No. 2 or 9: Paradeplatz Tram No. 6 / 7 / 11 or 13: Rennweg	100 meters
Zürcherhof	Tram No. 2 or 9 then Tram No. 6 or 7	Tiefenbrunnen (No. 2) / Hirzenbach (No. 9) then Werdhölzli (No. 4)	Tram No. 2 or 9: Bellevue Tram No. 4: Rudolf-Brun-Brücke	150 meters



ICN

8th Annual Conference | Zurich, Switzerland
June 3 – 5, 2009

3. TRAVEL INFORMATION

STANDING RECEPTION AT THE LAKE SIDE ON JUNE 3, 2009 FROM 6.00 PM TO 8.30 PM

The shuttle service brings you back to your hotel. The departure time for all shuttles buses will be at 8.30 pm. The shuttle bus stops will be located directly by the exit of the Lake Side. Please check the list below in order to find the appropriate bus to your hotel.

HOTEL	ROUTE	LINIE
Ascot	Route C	Pink-Line
Baur au Lac	Route B	Blue-Line
City-Hotel	Route A	Red-Line
Comfort Inn Royal	Route D	Green-Line
Continental	Route E	Yellow-Line
easy Hotel	Route E	Yellow-Line
Eden au Lac	Route B	Blue-Line
Engimatt	Route C	Pink-Line
Four Points	Route C	Pink-Line
Glärnischhof	Route B	Blue-Line
Glockenhof	Route E	Yellow-Line
Limmathof	Route D	Green-Line
Marriott Hotel	Route E	Yellow-Line
Park Hyatt Zurich	Route B	Blue-Line
Rütli Sorell Hotel	Route D	Green-Line
Scheuble	Route D	Green-Line
Seidenhof	Route E	Yellow-Line
Sheraton Neues Schloss Hotel	Route C	Pink-Line
Splügenschloss	Route C	Pink-Line
St. Gotthard	Route A	Red-Line
Widder Hotel	Route A	Red-Line
Zürcherhof	Route D	Green-Line

**ICN**8th Annual Conference | Zurich, Switzerland
June 3 – 5, 2009

3. TRAVEL INFORMATION

If you wish to stay longer at the Lake Side, you may take the public transport or walk alongside the lake. Please follow the instructions below in order to return to your hotel.

HOTEL	BUS OR TRAM NO.	DIRECTION	STATION	WALK DISTANCE TO THE HOTEL
Ascot	Bus No. 912 or 916 then Tram No. 5	Bellevue (Bus No. 912 or 916) then Laubegg (Tram No. 5)	Bus: Bellevue Tram: Bahnhof Enge	50 meters
Baur au Lac	Bus No. 912 or 916 then Tram No. 2 / 5 / 9 / 11	Bellevue (Bus No. 912 or 916) then Farbhof (Tram No. 2) / Laubegg (Tram No. 5) / Heuried (Tram No. 9) / Auzelg (Tram No. 11)	Bus: Bellevue Tram: Bürkliplatz	100 meters
City-Hotel	Bus No. 912 or 916 then Tram No. 2 or No. 9	Bellevue (Bus No. 912 or 916) then Farbhof (Tram No. 2) or Heuried (Tram No. 9)	Bus: Bellevue Tram: Sihlstrasse	250 meters
Comfort Inn Royal	Bus No. 912 or 916 then Tram No. 15	Bellevue (Bus No. 912 or 916) then Bucheggplatz (Tram No. 15)	Bus: Bellevue Tram: Haldenegg	20 meters
Continental	Bus No. 912 or 916 then Tram No. 11	Bellevue (Bus No. 912 or 916) then Auzelg (Tram No. 11)	Bus: Bellevue Tram: Stampfenbachplatz	100 meters
easy Hotel	Bus No. 912 or 916 then Tram No. 11 then Bus No. 31	Bellevue (Bus No. 912 or 916) then Auzelg (Tram No. 11) then Schlieren Zentrum (Bus No. 31)	Bus No. 912 / 916: Bellevue Tram No. 11: Bahnhofstrasse Bus No. 31: Kanonengasse	100 meters
Eden au Lac	Bus No. 912 or 916	Bellevue (Bus No. 912 or 916)	Kreuzstrasse	150 meters
Engimatt	Bus No. 912 or 916 then Tram No. 5	Bellevue (Bus No. 912 or 916) then Laubegg (Tram No. 5)	Bus: Bellevue Tram: Sihlcity Nord	100 meters
Four Points	Bus No. 912 or 916 then Tram No. 5	Bellevue (Bus No. 912 or 916) then Laubegg (Tram No. 5)	Bus: Bellevue Tram: Sihlcity Nord	50 meters

**ICN**8th Annual Conference | Zurich, Switzerland
June 3 – 5, 2009

3. TRAVEL INFORMATION

HOTEL	BUS OR TRAM NO.	DIRECTION	STATION	WALK DISTANCE TO THE HOTEL
Glärnischhof	Bus No. 912 or 916 then Tram No. 8	Bellevue (Bus No. 912 or 916) then Hardplatz (Tram No. 8)	Bus No. 912 / 916: Bellevue Tram: Stockerstrasse	150 meters
Glockenhof	Bus No. 912 or 916 then Tram No. 11	Bellevue (Bus No. 912 or 916) then Auzelg (Tram No. 11)	Bus No. 912 / 916: Bellevue Tram: Rennweg	100 meters
Limmathof	Bus No. 912 or 916 then Tram No. 4	Bellevue (Bus No. 912 or 916) then Werdhölzli (Tram No. 4)	Bus: Bellevue Tram: Central	50 meters
Marriott Hotel	Bus No. 912 or 916 then Tram No. 11	Bellevue (Bus No. 912 or 916) then Auzelg (Tram No. 11)	Bus No. 912 / 916: Bellevue Tram: Stampfenbachplatz	50 meters
Park Hyatt Zurich	Bus No. 912 or 916 then Tram No. 8	Bellevue (Bus No. 912 or 916) then Hardplatz (Tram No. 8)	Bus No. 912 / 916: Bellevue Tram: Stockerstrasse	200 meters
Rütli Sorell Hotel	Bus No. 912 or 916 then Tram No. 4	Bellevue (Bus No. 912 or 916) then Werdhölzli (Tram No. 4)	Bus: Bellevue Tram: Central	100 meters
Scheuble	Bus No. 912 or 916 then Tram No. 4	Bellevue (Bus No. 912 or 916) then Werdhölzli (Tram No. 4)	Bus: Bellevue Tram: Rudolf-Brun-Brücke	100 meters
Seidenhof	Bus No. 912 or 916 then Tram No. 11	Bellevue (Bus No. 912 or 916) then Auzelg (Tram No. 11)	Bus No. 912 / 916: Bellevue Tram: Rennweg	100 meters
Sheraton Neues Schloss Hotel	Bus No. 912 or 916 then Tram No. 8	Bellevue (Bus No. 912 or 916) then Hardplatz (Tram No. 8)	Bus No. 912 / 916: Bellevue Tram: Stockerstrasse	200 meters
Splügenschloss	Bus No. 912 or 916 then Tram No. 5	Bellevue (Bus No. 912 or 916) then Laubegg (Tram No. 5)	Bus No. 912 / 916: Bellevue Tram No. 5: Rentenanstalt	150 meters
St. Gotthard	Bus No. 912 or 916 then Tram No. 11	Bellevue (Bus No. 912 or 916) then Auzelg (Tram No. 11)	Bus No. 912 / 916: Bellevue Tram: Bahnhofstrasse	50 meters
Widder Hotel	Bus No. 912 or 916 then Tram No. 11	Bellevue (Bus No. 912 or 916) then Auzelg (Tram No. 11)	Bus No. 912 / 916: Bellevue Tram: Rennweg	100 meters
Zürcherhof	Bus No. 912 or 916 then Tram No. 4	Bellevue (Bus No. 912 or 916) then Werdhölzli (Tram No. 4)	Bus: Bellevue Tram: Rudolf-Brun-Brücke	100 meters



ICN

8th Annual Conference | Zurich, Switzerland
June 3 – 5, 2009

3. TRAVEL INFORMATION

DINNER ON THE MOUNTAIN ON JUNE 4, 2009 FROM 8.00 PM TO 11.00 PM

At 10.40 pm, we will walk to the station where we will take two special trains. At the *Schweighof* station, we will get on the shuttle buses. The hostesses will show you the way to the shuttle buses.

Please check the list below in order to find the appropriate bus to your hotel.

HOTEL	ROUTE	LINIE
Ascot	Route C	Pink-Line
Baur au Lac	Route B	Blue-Line
City-Hotel	Route A	Red-Line
Comfort Inn Royal	Route D	Green-Line
Continental	Route E	Yellow-Line
easy Hotel	Route E	Yellow-Line
Eden au Lac	Route B	Blue-Line
Engimatt	Route C	Pink-Line
Four Points	Route C	Pink-Line
Glärnischhof	Route B	Blue-Line
Glockenhof	Route E	Yellow-Line
Limmathof	Route D	Green-Line
Marriott Hotel	Route E	Yellow-Line
Park Hyatt Zurich	Route B	Blue-Line
Rütli Sorell Hotel	Route D	Green-Line
Scheuble	Route D	Green-Line
Seidenhof	Route E	Yellow-Line
Sheraton Neues Schloss Hotel	Route C	Pink-Line
Splügenschloss	Route C	Pink-Line
St. Gotthard	Route A	Red-Line
Widder Hotel	Route A	Red-Line
Zürcherhof	Route D	Green-Line

The last train from Uetliberg to the main station of Zurich leaves at 11.36 pm. It will take twenty minutes by train to reach Zurich. You can get to the ICN Conference Hotels from the main station by tram or bus. Please note that, if you miss the last train from the Uetliberg, you will have to go back to Zurich on foot.

We wish you a pleasant stay in Zurich and a fulfilling ICN experience!

Swiss Competition Commission